



STOUT[®] *DIRECT*

WELDING CATALOG

2023



TABLE OF CONTENTS

ABRASIVES.....	3-4
CHEMICALS, LUBRICANTS & PAINTS.....	4-5
HAND TOOLS.....	5-10
JANITORIAL EQUIPMENT.....	11
MARKING TOOLS.....	11-14
MATERIAL HANDLING.....	15
MEASURING AND LEVELING TOOLS.....	16-17
PNEUMATICS.....	18
POWER TOOLS.....	18-25
SAFETY & SECURITY.....	25-33
WELDING SUPPLIES.....	33-39

BONDED ABRASIVES

Resin Bonded Abrasives



Gold AO Depressed Center Wheels

Features:

- Ideal for on-site and small-unit jobs.
- Maximum cut rate.
- Minimum kerf loss.
- Resists breakage and provides straight cutting.

Thickness: 1/4 in

Grit: 24

Tool Shape: Type 27



SKU	Dia.	Arbor Size	Speed
481-05539502842	4-1/2 in	7/8 in	13,580 RPM
481-05539502843	4-1/2 in	5/8 in - 11	13,580 RPM
481-05539502854	7 in	5/8 in - 11	8,600 RPM



Bluefire® Type 27 Depressed Center Wheels

Features:

- A blend of R&D advanced chemistry and shaped zirconia alumina abrasive and premium aluminum oxide grain.
- Up to 20 percent increase in performance and life over our former zirconia alumina wheels.
- Excellent performance-to-price ratio for lower total grinding costs.

Test & Approvals: ANSI

Arbor Size: 5/8-11 in

Grit: 24



SKU	Dia.	Thickness	Speed
547-66252843213	4-1/2 in	1/4 in	13580 RPM
547-66252843233	7 in	1/8 in	8600 RPM



Gemini® Type 1 Reinforced Cut-Off Wheels

Features:

- Free Cut--hard materials.
- Long Life--excellent life and cut rate.

Test & Approvals: ANSI

Thickness: 0.035 in

Arbor Size: 3/8 in

Grit: 60

Speed: 25465 RPM



SKU	Tool Shape	Dia.
547-66243510628	Type 01/41	3 in



Gemini® Type 27 Grinding and Cutting Wheels

Features:

- High-performance bond and wheel hardness are designed for fast cut and up to 60% more life and metal removed per wheel.
- Upgraded with a new premium aluminum oxide grain for 15% faster cut rate.
- Good choice for grinding 400 series stainless and hard and soft carbon steel applications including heavy stock removal, weld repairs, flashing, multi-pass welding for pipefitting, notching and any job that requires a quick turnaround.

Speed: 13580 RPM

Dia.: 4-1/2 in



SKU	Thickness	Arbor Size
547-66252843590	1/8 in	5/8 in-11
547-66252843593	1/4 in	5/8 in-11
547-66252843594	1/4 in	7/8 in



Type 27 NorZon® Plus Depressed Center Grinding Wheels

Features:

- Combination of ceramic alumina and zirconia alumina with an advanced bond system.
- Easy on the operator and equipment.
- Foundry snagger is designed to withstand the most aggressive foundry application.



Test & Approvals: ANSI

Thickness: 1/8 in

Arbor Size: 5/8-11 in

Grit: 30

Speed: 8600 RPM

SKU	Dia.
547-66252939184	7 in

COATED ABRASIVES

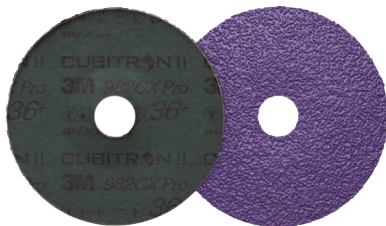
Coated Disc Abrasives



3M™ Cubitron™ II Fibre Disc 982CX Pro

Features:

- Faster cutting and longer lasting compared to Cubitron™ II Fibre Discs 982C.
- Cuts with less pressure, helps reduce operator fatigue.
- Ideal for medium and high-pressure applications like weld removal, beveling, and other aggressive grinding applications.
- Use on carbon steel.
- INOX and contaminant free.



Grit: 36+

Abrasive Material: Precision Shaped Ceramic

Body Material: Fibre | **Arbor Diam.:** 7/8 in

Mounting: Center Hole Attachment Type

Applications: Beveling; Grinding; Heavy Deburring; Robotic and Other Automated Applications; Weld Removal

SKU	Dia.	Speed
405-638060-83313	4-1/2 in	13,300 RPM
405-638060-83314	5 in	12,000 RPM
405-638060-83315	7 in	8,600 RPM

WIRE BRUSH ABRASIVES

Wheel Brushes



Stringer Bead Wheel Brushes

Features:

- Very narrow face design primarily for weld cleaning and to access hard-to-reach areas.

Arbor Diam: 5/8 in - 11

Arbor Thread: 5/8 in - 11

Bristle Material: Carbon Steel

Bristle Diam.: 0.02in



SKU	Dia.	No. of Knots	Face Width
102-4S58	4 in	30	4 in
102-6S58	6 in	48	6 in

LEAK DETECTORS & PENETRANTS

Penetrants



Specialist Fast-Acting Penetrant Spray with Flexible Straw

Features:

- 8-inch flexible straw bends and keeps its' shape.
- Unlimited access to hard-to-reach jobs.
- This formula penetrates into tight crevices.

Packing Type: Aerosol Can



SKU	Capacity Vol.
780-300486	14 oz

LUBRICANTS & PENETRANTS

Oils



3-IN-ONE® Multi-Purpose Oils

Features:

- It lubricates, cleans and prevents rust.
- Precise lubrication.

Packing Type: Can

Temp. Range: -25° F - 300° F

Flash Point: 305° F

Color: Clear Amber

Odor/Scent: Faint Citronella



SKU	Capacity Vol.	Container Size
780-10138	8 oz	8 oz



Open Stock Lubricants

Features:

- Lubricating ingredients are widely dispersed and hold firmly to all moving parts.
- Dissolves adhesives, allowing easy removal of labels, tape, stickers, and excess bonding material.
- Protects metal surfaces with corrosion-resistant ingredients to shield against moisture and other corrosive elements.
- Loosens rust-to-metal bonds and frees stuck, frozen or rusted metal parts.
- Product displaces moisture quickly and dries out electrical systems to eliminate moisture-induced short circuits.

Packing Type: Aerosol Can

Temp. Range: -50° F - 300° F

Flash Point: 122° F

Color: Amber

Odor/Scent: Mineral Oil



SKU	Capacity Vol.	Container Size
780-490095	18 oz	18 oz

CLAMPS & VISES

Clamps & Spreaders



Locking C-Clamps

Features:

- Corrosion-resistant nickel-plated finish.
- Compound action for powerful non-slip locking grip.
- Maximum jaw opening per ASME specs.

Type: With Swivel Pad Tips

Body Material: Steel

Handle Type: Locking Grip

Handle Material: Steel



SKU	Overall Length
181-C11CCSVN	11 in



Locking C-Clamps with Swivel Pads

Features:

- Wide-opening jaws provide greater versatility.
- Swivel pads hold tapered work, awkward fabricating jobs, and delicate projects.
- Turn screw to adjust pressure and fit.
- Constructed of high-grade heat-treated alloy steel.
- Guarded release trigger quickly unlocks and protects from accidental release.

Throat Depth: 2-5/8 in



SKU	Overall Length
586-11SP	11 in



The Original™ Locking C-Clamps with Regular Tips

Features:

- Wide-opening jaws provide greater versatility in clamping a variety of shapes.
- Turn screw to adjust pressure and fit.
- Constructed of high-grade heat-treated alloy steel.
- Classic trigger release designed to provide maximum locking force.

Test & Approvals: ASME B107.36-2002

Type: Locking C-Clamp

Throat Depth: 2-5/8 in

Pressure: Adjustable Turn Screw

Body Material: Heat-Treated Alloy Steel

Handle Type: Vise-Grip Release

Handle Material: Heat-Treated Alloy Steel



SKU	Opening Size	Overall Length
586-11R	4 in	11 in



400 Series C-Clamps

Features:

- Drop forged steel frame, regular duty with extra deep-throat.
- Black oxide spindles and perma-pad® resist corrosion and are replaceable.
- Innovative frame geometry for maximum strength.

Type: C-Clamp

Spindle Dia: 3/4 in

Body Material: Forged Steel

Handle Type: Sliding Pin

Handle Material: Steel



SKU	Opening Size	Throat Depth	Pressure
825-14242	4-1/4 in	3-1/4 in	6,200 lb
825-14256	6-1/16 in	4-1/8 in	6,600 lb
825-14270	8-1/4 in	5 in	6,900 lb
825-14284	10-1/8 in	6 in	8,000 lb



Spark-Duty™ 400CS Hi-Vis C-Clamps

Features:

- Manufactured with drop-forged steel for greater strength in standard applications.
- V-grooved anvil feature allows secure holding of all materials including rounds, squares, and flats.
- Acme-rolled threads provide continuous smooth operation for faster clamping action and maximum strength.
- Spindles and Perma Pads® are copper-plated to provide resistance to welding spatter and corrosion.
- Ideal for industrial welders and steel fabrication.
- Hi-Vis option (400CS) conforms to OSHA Safety Color Standard for Physical Hazards Regulation 1910.144.

Throat Depth: 4-1/8 in

Pressure: 6,600 lb

Spindle Dia: 3/4 in

Body Material: Drop-Forged Steel

Handle Type: Sliding Pin

Handle Material: Copper-Plated Drop-Forged Steel



SKU	Opening Size
825-14257	0 to 6-1/16 in



Regular Duty F-Clamps

Features:

- Black oxide spindle resists wear and tear while impeding rust.
- Drop forged arm provides minimal flex under heavy work loads.
- Swivel pad centers on work piece for a sturdy hold.
- Sturdy tommy bar is engineered for durability and comfort.

Load Cap.: 1,800 lb

Style: Regular-Duty; F-Clamp

Bar Width: 1 in

Bar Thickness: 15/32 in

Spindle Diam: 3/4 in

Body Material: Forged Steel; Extruded Steel

Body Finish: Zinc Plated

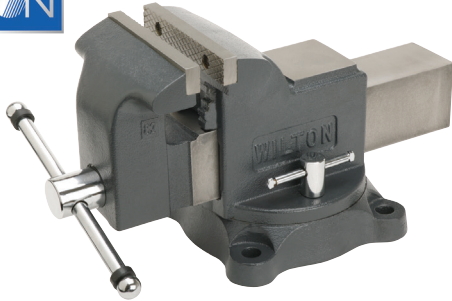
Handle Type: Sliding Pin; Tommy Bar

Handle Material: Steel



SKU	Opening Size	Throat Depth
825-86200	8 in	4-3/4 in
825-86210	12 in	5-1/2 in
825-86220	18 in	4-3/4 in

Vises



Shop Bench Vises

Features:

- Heavy duty 30,000 PSI casting for strength and durability.
- Replaceable top jaws and built-in pipe jaws.
- 360° swivel base with double lockdown for quick and easy positioning.
- Designed for general duty applications.
- Built-in pipe jaws handle various pipe sizes.
- Rubber pinch point safety guards.
- Large anvil work surface.

Jaw Material: Hardened Steel

Material: Cast Iron; Ductile Iron Base

Finish: Matte Gray

SKU	Jaw Width	Jaw Opening	Throat Depth	Pipe Jaw Cap.
825-63302	6 in	6 in	3-1/2 in	5/8 in - 2-1/2 in
825-63304	8 in	8 in	4 in	3/4 in - 3 in



Straight Pipe Welding Vises

Features:

- Resists strain, heat, and warpage during tacking.
- Machined swivel nuts, pins, and special chain screws for trouble free assembling of the vise onto the pipe.

Wt.: 16 lb

SKU	Pipe Cap.	Material
632-40220	1/2 in - 8 in	Cast Iron

FILES

Flat Files



Flat Bastard-Cut Files



Features:

- Ideal for machinists, machinery builders, ship and engine builders.
- Can be used effectively by repairmen and others who require rapid removal of metal.
- Rectangular cross-section allows you to smooth and sharpen straight surfaces, while slight taper in width towards the file's point creates ease of access in slots.
- Double-cut on the sides for rough filing and single-cut on the edges for a smooth finish.

Tooth Pattern: American

Cross Section Shape: Flat

Applicable Materials: Draw filing; Finishing Metals

SKU	Cut Type	Length
183-03764NN	Bastard Cut	12 in
183-03665NN	Bastard Cut	10 in

Round Files



Machinists Boxed Round Files



Features:

- Single-cut, tapered round file provides the right touch for smoothing rough edges.
- Best suited for recessed surfaces or circular openings.
- Versatile tool for metalworking or woodworking environments.

Tooth Pattern: Curved - Single Cut

Cross Section Shape: Round

Tool Shape: Taper to Point

Applicable Materials: Most Metals

SKU	Style	Cut Type
183-12019	American Pattern	Bastard Cut

HAMMERS, SLEDGES, MALLETS & AXES

Hammers

STANLEY



COMPO-CAST® Soft-Face Sledge Hammers

Features:

- Non sparking soft face sledge hammers.
- Flat area on head allows upright storage.
- Urethane covering helps reduce noise pollution.
- Steel reinforced handle provides added strength and safety, resists breaking on overstrike.
- Dead blow function uses steel shot.

Face Diam: 3-1/2 in

Head Length: 8 in

Color: Orange

SKU	Head Weight	Head Material
680-57-552	11 lb	Urethane

MULTI-PURPOSE HAND TOOL SETS

Multi-Purpose Tool Sets

CRESCENT



1/4 in and 3/8 in Drive 6-Pt SAE/Metric Professional Tool Sets

Features:

- Contains a carefully selected assortment of hand tools needed for most industrial, mechanical, and consumer applications.
- Incredible access from long wrenches with narrow heads, adjustable wrenches and pliers, and a long-beam ratchets with small teardrop heads.
- Long nose and diagonal pliers with professional, ergonomic dipped grips wipe clean easily.
- Co-molded bit driver and screwdriver handles with ergonomic grip for improved performance.
- Shallow and deep SAE/metric 6-point full polish chrome sockets with stamped size markings for easy socket identification.
- 6 inch adjustable wrench with hex jaw design reduces slippage by gripping fasteners tightly.
- Manufactured from chrome alloy steel for better strength and longer tool life.
- Includes blow mold case for storage and organization.

Quantity: 180 pc

SKU	Includes	Drive Size
181-CTK180	(2) Ratchets; (3) Extensions Adapter; (51) Standard Sockets; (31) Deep Sockets Spark Plug Socket; (12) Combination Wrenches; (24) Hex Keys; (2) Pliers Adjustable Wrench; (4) Screwdrivers Magnetic Bit Driver; (46) Bits; Bit Adapter	1/4 in; 3/8 in

PLIERS & CUTTERS

Locking Pliers



Locking Chain Clamps

Features:

- Chain holds and locks around any shape or size.
- Turn screw to adjust pressure and fit.
- Constructed of high-grade heat-treated alloy steel.
- Guarded release trigger quickly unlocks and protects from accidental release.
- Replacement chain available and sold separately.



Test & Approvals: Meets Federal Specifications: GGG-W-00649

Material: High-Grade Heat Treated Alloy Steel

Chain Length: 18 in

SKU	Jaw Opening	Overall Length
586-20R	18 in	9 in



WISE-GRIP® Straight Jaw Locking Pliers

Features:

- Straight jaws provide maximum contact on flat, square, or hex work.
- Ideal for tightening, clamping, twisting and turning.

Test & Approvals: Meets federal Specifications: GGG-W-00649

Throat Depth: 1-3/4 in

Material: Alloy Steel



SKU	Jaw Opening	Overall Length
586-10R-3	1-5/8 in	10 in



WISE-GRIP® The Original™ Curved Jaw Locking Pliers with Wire Cutters

Features:

- Curved jaw puts tremendous pressure on four points of any style nut or bolt head.
- Includes convenient wire cutter.
- Constructed of high-grade heat-treated alloy steel for maximum toughness and durability.
- Guarded release trigger quickly unlocks and protects from accidental release.
- Turn screw to adjust pressure and fit, stays adjusted for repetitive use.
- Hardened teeth are designed to grip from any angle.
- Hex key adjusting screw offers controlled release and draws materials tightly together.



Test & Approvals: Meets federal Specifications: GGG-W-00649

Throat Depth: 2-5/8 in

Material: Alloy Steel

SKU	Jaw Opening	Overall Length
586-10WR-3	1-7/8 in	10 in

Specialty Pliers



MIG Welding Pliers

Features:

- Strong, sharp welding pliers is a must tool for mig welding operations.
- Multipurpose tool with 8 functions resulting in more efficient time and production.
- Durable carbon steel construction paired with an easy to use spring operated handle.

Jaw Shape: Double-Edged

Material: Carbon Steel



SKU	Overall Length	Wire Diam
900-YS-50	21 cm	0.8 mm - 1.5 mm



MIG Welding Pliers

Features:

- Specially-designed nose for efficient removal of welding spatter.
- Induction-hardened cutting edge stays sharp longer.
- Multiple jaws for drawing out wire and removing or installing contact tips and nozzles.
- Spring-loaded for ease of use.
- Dipped grips for superior comfort.
- Hammer designed for light welding gun maintenance.



SKU	Overall Length	Material
586-1873303	8 in	Metal; Blade Steel-

TOOL STORAGE

Tool Chests



Site-Vault™ Heavy-Duty Chests

Features:

- Site-Vault™ security system is a patented system with 3 locking points and a reflective orange lock indicator that shows when the box is locked or unlocked.
- Heavy-duty beveled edge lid eliminates sharp front lid corners and enhances lid strength.
- Integrated sidewall storage locker can be padlocked for personal items.
- Heavy-duty EZ-Loader 4-way skid bolsters allow fork lift loading from any side for quicker and easier transport.
- Upgraded lock system now allows usage of padlock models Master #1, #5, #175 and American #50.

Color: Brown

Width: 48 in

Depth: 21 in

Height: 30.75 in

Material: Steel

Wt.: 148 lb

SKU	Capacity Vol.	No. of Drawers
217-2-654990	20.5 ft ³	1



26 in Machinists' Top Chests

Features:

- Drop front panel adds security.
- Heavy duty steel plated side handles.
- Wool felt-lined drawers.
- High security tubular locking system.
- Holds up to 90 lb per drawer.
- Two-piece welded friction drawer slides.
- Light-duty rating.
- Options available for 8-drawer with 5 adjustable drawer dividers and 11-drawer with 6 adjustable drawer dividers.
- Compatible with mid chests 2600, 2602, 2603, 2604, 5150, 2805X, 285X, and MC28.
- Compatible with roller cabinets 273X, 275X, 277X, 295X, 297X, 310X, 315X, 348X, and 378X.

Color: Brown Wrinkle

Width: 26-3/4 in

Depth: 8-1/2 in

Height: 18 in

Drawer Dimensions: (1) Top Till 26-1/2 in W x 8-1/2 in D x 18 in H; (1) HB Drawer 5-1/2 in W x 7-1/2 in D x 4-3/8 in H; (6) 8-5/8 in W x 7-1/2 in D x 1 in H; (1) 8-5/8 in W x 7-1/2 in D x 2 in H; (1) 24-3/4 in W x 7-1/2 in D x 1-1/2 in H; (1) 24-3/4 in W x 7-1/2 in D x 2-1/4 in H; (1) 24-3/4 in W x 7-1/2 in D x 3-1/8 in H

Material: 20 ga Steel Body; 22 ga Steel Drawers

Wt.: 47 lb

SKU	Capacity Vol.	No. of Drawers
444-52611B	3,000 in ³	11

WRENCHES

Pipe Wrenches



Aluminum Straight Pipe Wrenches

Features:

- Nearly 40% lighter than comparable cast-iron models.
- Jaws and all other parts identical to Ridgid heavy duty wrenches.

Material: Aluminum

Jaw Material: Alloy Steel

Handle Type: I-Beam

SKU	Pipe Cap.	Overall Length	Wt.
632-31100	2-1/2 in	18 in	3-3/4 lb
632-31105	3 in	24 in	6 lb
632-31110	5 in	36 in	11 lb

PERSONAL HYGIENE

Hand Cleaners



All Purpose Waterless Hand Cleaners

Features:

- Unique blend designed to clean the hands without harsh acids or alkalis.
- Works equally well with or without the use of water.
- Leaves hands looking and feeling clean, conditioned, and without the greasy feeling associated with most hand cleaners.

Odor/Scent: Banana



SKU	Packing Type	Capacity Vol.	Capacity Wt.	Quantity
407-101P	Plastic Can	4 lb 5 oz	4 lb 5 oz	6 CN/CS
407-105	Plastic Squeeze Tube	14 oz	14 oz	12 TB/CS



Lava® Hand Cleaners

Features:

- Moisturizes.
- Pumice is used in combination with other cleaning agents.

Odor/Scent: Unscented

Capacity Wt.: 5-3/4 oz

Quantity: 24 per case

SKU	Packing Type
780-10185	Bar

CRAYONS



Quik Stik®+ Oily Surface Solid Paint Markers

Features:

- Industrial-grade paint formula for exceptional performance on oily and wet surfaces.
- Also writes on dry, smooth, or rough surfaces.
- Fast-drying, vibrant paint marks dry in 30 seconds to 1 minute on dry surfaces, does not smear when over stacking.
- Twist-up knob easily advances permanent solid paint to keep hands, clothing and toolboxes clean.
- Weather and UV-resistant for long lasting marks.
- Easy grip airtight cap for convenient pocket storage, self-storing cap keeps the marker clean and fresh between uses.



Length: 6 in

Temp. Range: -50° F - 150° F

Flash Point: 66.2° F

Applicable Materials: Ceramic; Concrete and Stone; Glass; Plastic; Rubber and Tires; Steel and Iron

Resistance: UV; Weather

SKU	Color
434-28880	White

MARKER HOLDERS



Starter Lead Pro Holders

Features:

- Mechanical holder for hard-to-reach areas.

Includes: Built in Sharpener

Used With: Markal Pro Refills

Material: Metal

Length: 6.125 in

Width: 0.5 in

Height: 1 in

Quantity: 1 each

Wt.: 0.12 lb

SKU	Type	Color
434-96270	Mechanical Marker	Silver/Blue

MARKERS

MARKAL®



Paint-Riter®+ Heat Treat Liquid Paint Markers

Features:

- Unique liquid paint marker engineered with industry-leading PrismaLock™ technology, which locks in colors for bright, bold marks that can withstand temperatures of up to 1,800°F (982°C).
- By using specialty pigments and resins, this fast-drying paint offers unparalleled durability and mark readability, with some colors retaining easily legible marks up to 2,200° F (1,204° C).

Test & Approvals: Meets California VOC Regulations

Tip Size: 1/8 in

Tip Type: Bullet

Temp Range: -50° F - 150° F

SKU	Color	Physical Form
Maximum mark readability 2,100° F (1,148° C).		
434-97301	White	Liquid

MARKAL®



Paint-Riter®+ Rough Surface Liquid Paint Markers

Features:

- Engineered for continuous and highly-visible marking on rough, rusty, and dirty surfaces.
- Enamel paint for extreme durability and enhanced wear-, weather-, and chemical-resistance.
- Available in 14 bold, fast-drying colors for immediate handling and reduced downtime.
- Xylene-free paint reduces user health risks and eliminates California Proposition 65, EPA HAPS and SARA 313 concerns in the U.S.A.
- Durable metal barrel and clip-cap reduce breakage and store easily in pocket.
- Made in the U.S.A.

Test & Approvals: Meets California VOC Regulations

Tip Size: 1/8 in; Broad

Tip Type: Bullet

Temp Range: -50° F - 150° F

SKU	Color	Physical Form
434-97251	Yellow	Liquid

MARKAL®



Quik Stik®+ Glow in the Dark Solid Paint Markers

Features:

- Photoluminescent white paint glows in the dark for up to 30 minutes when charged with light to provide increased visibility of marks.
- Marks on virtually any surface including: dry, wet, smooth, rough or hot.
- Durable, plastic twist-up barrel advances and retracts solid paint by turning twist-up knob, reducing breakage and keeping hands, clothing and toolboxes clean.
- Easy-Grip airtight cap for convenient pocket storage.
- Self-storing cap keeps the marker clean and fresh between uses.
- Weather-resistant paint formula for long-lasting marks.
- Marking range: 0°F to 480°F (-15°C to 250°C).
- Made in the U.S.A.

Tip Type: Bullet

Temp Range: 0° F - 480° F

SKU	Color	Physical Form
434-28850	Green	Solid

MARKAL®

Quik Stik®+ Oily Surface Mini Solid Paint Markers

Features:

- Industrial-strength paint dries quickly for long-lasting, permanent marks.
- Marks on virtually any surface-oily, wet, smooth, or rough.
- Solid paint marker easily advances for paint on demand.
- Airtight, self-storing cap keeps the marker clean and fresh between uses.
- Cured marks will withstand temperatures in excess of 500° F (250° C).
- Made in USA.

Test & Approvals: OSHA

Temp Range: -50° F - 150° F

Quantity: 12 EA/BX



SKU	Color
434-28770	White
434-28771	Yellow



Silver-Streak® Metal Markers with Mechanical Holder

Features:

- Highly-visible marks illuminate when cutting or welding.
- Superior to soapstone in markability and durability-will not rub, burn, or blow off surface.
- Marks on oily, wet or rusty metals, and will not scratch or abrade surfaces.
- Durable, mechanical holder prevents stick breakage and features a convenient, built-in sharpener, and pocket clip for easy storage.
- Refills (96007) available.

Tip Size: 1/8 in

Tip Type: Round

SKU	Color	Physical Form
434-96006	Silver	Reflective Lead

PENCILS



Red-Riter® Welder's Pencils

Features:

- Economical, high-strength pencil is ideal for marking all types of metal surfaces – even oily, rusty or wet surfaces.
- Marks resistant to torch flames, will not rub off or burn off like soapstone.
- Highly visible marks illuminate when cutting or welding.
- Durable marks will not scratch or abrade metal surfaces.
- Hexagonal shape reduces barrel roll.
- Pre-sharpened pencils can be easily resharpened with any standard pencil sharpener.
- Highly visible red color for aluminum or other bright metals.

Color: Red

Length: 4-5/8 in

Quantity: 1 dozen

SKU
434-96100



Silver-Streak® Welders Pencils

Features:

- Economical, high-strength pencil is ideal for marking all types of metal surfaces – even oily, rusty or wet surfaces.
- Marks resistant to torch flames, will not rub off or burn off like soapstone.
- Highly visible marks illuminate when cutting or welding.
- Durable marks will not scratch or abrade metal surfaces.
- Hexagonal shape reduces barrel roll.
- Pre-sharpened pencils can be easily resharpened with any standard pencil sharpener.
- Highly visible silver color for darker surfaces.

Color: Silver

Length: 7 in

SKU	Lead Grade
434-96101	#2

SOAPSTONES



Soapstones

Features:

- All white texture for excellent marking quality.
- Grain cut to ensure good strength and long service life.
- Marks will not contaminate welds and are easily removed.
- Low water content for increased hardness and resistance to breakage.

Length: 5 in

SKU	Shape	Color
900-FL-5	Flat	White

TEMPERATURE INDICATORS

Tempil



Tempilstik® Temperature Indicator Sticks

Features:

- Specially engineered for accurate temperature indication in pre-heating, interpass, and post-weld heat treating applications.
- Available from 100° F (38° C) to 2,000° F (1,093° C).
- Stick instantly melts at designated temperature for easy and immediate visual inspection.
- Calibration-free with 100% reliability.
- Accurate to within +/- 1% of Fahrenheit and +/- 3% Celsius rated.
- Imprinted part number, temperature, and lot code across entire stick for improved traceability.
- Made in USA.

Accuracy: ±1 %

SKU	Temp. Range	Length	Quantity
434-28006	150° F	0.625 in	10 per box
434-28012	200° F	0.625 in	10 per box
434-28019	250° F	0.625 in	10 per box
434-28026	300° F	0.625 in	10 per box
434-28031	350° F	5.5 in	10 per box
434-28035	400° F	5.5 in	10 Per Box
434-28039	450° F	5.5 in	10 Per Box

CARTS & TRUCKS

Cylinder Carts & Trucks



Cryogenic Use Single-Cylinder Carts

Features:

- Heavy-duty style frame.
- Ratchet style hook.

Width: 28 in

Height: 46 in



SKU	Load Cap.
021-87U-4	900 lb



Cylinder Trucks

Features:

- Heavy-duty reinforced frame.
- Solid rubber wheels.

Cylinder Diam: 12 in

Width: 22 in

Height: 48 in



SKU	No. of Cylinders
021-54PN	1



Dual-Cylinder Delivery Carts

Features:

- Heavy-duty reinforced frame.
- Designed with a dual grip handle so the operator can maneuver (2) large high pressure cylinders with ease.
- Ball-bearing wheels with solid rubber tires.

Width: 21 in OD

Height: 48 in

Acetylene Cylinder: 10 in

Oxygen Cylinder: 10 in



SKU	Load Cap.	No. of Cylinders	Cylinder Diam	Depth
Flat Free				
021-55FF-3B	—	2	10 in	—
Solid Rubber/Plastic Rim; Secured with Locknuts				
021-55-3B	500 lb	2	9 in	10 in



Patented Load-N-Roll® Cylinder Carts with Built in Firewall

Features:

- The patented four wheel cart design features strategically placed heavy duty locking front casters that allows the operator two ways to move the cylinder load.
- Simply push the cart upright using all four wheels or tilt the cart back and move it the traditional way over rough and cluttered surfaces.

Width: 37 in

Height: 62 in



SKU	No. of Cylinders	Acetylene Cylinder	Oxygen Cylinder
Flat Free Foam			
021-94LFW-16-FF-LNR	2	210 - 420 cu ft	244 - 330 cu ft
Pneumatic			
021-94LFW-16-LNR	—	420 cu ft	330 cu ft
Solid Rubber			
021-94LFW-16S-LNR	—	420 cu ft	330 cu ft



Single-Cylinder Delivery Carts

Features:

- Heavy-duty reinforced frame.
- Solid rubber wheels.

Cylinder Diam: 12 in

Width: 18 in

Height: 48 in

Acetylene Cylinder: 12 in

Oxygen Cylinder: 12 in



SKU	Load Cap.	No. of Cylinders
Solid Rubber/Plastic Rim; Secured with Locknuts		
021-54	500 lb	1



550 Series Carts

Features:

- Perfect for larger construction and industrial sites where lifting cylinders is necessary.
- Accommodates variable wheel sizes.

Test & Approvals: Meets and Exceeds OSHA 1910.253

Cylinder Diam: 12-1/2 in

Depth: 13 in

Width: 35 in

Height: 62 in

Acetylene Cylinder: 12-1/2 in

Oxygen Cylinder: 9-1/2 in



SKU	Load Cap.	No. of Cylinders
339-552-16FW	1000 lb	2

STORAGE

Jobsite Boxes



Heavy-Duty Chests

Features:

- Compact and portable tool chests offer essential storage staples for workers on the go.
- 16-gauge reinforced steel construction provides years of hard-working service and security.
- Locking hasps or embedded lock options available.

Height: 12 in

Depth: 16 in

Material: 16 ga Steel

SKU	Capacity Vol.	Width
217-650990D	3.3 ft ²	30 in

FLANGE PINS & ALIGNERS



Pipe Flange Aligners

Features:

- The Magnetic Flange Aligner with the newest OFF/ON 90 lb. holding power magnet technology.
- The Magnetic Flange Aligner is your third hand and has no threads or nuts to deal with while working on your project.
- Thickness of the flange is no longer an issue.
- Two (2) sizes of Centering Alignment Cones are included: Small Cones for flange holes 1/2 to 1-7/16-inch in diameter and Large Cones for flange holes 1/2 to 1-15/16-inch in diameter.
- The New Aligner comes in a compact case that will protect the tool from damage and keep it together in one place ready to use.



Hole Diam: 1/2 in - 2 in

Includes: (2) Small Cones for flange holes 1/2 in to 1-7/16 in in diameter; (2) Large Cones for flange holes 1/2 in to 1-15/16 in in diameter. (1) ON/OFF switch

SKU	Material	Pin Type
496-38240-MAK	Aluminum	Magnetic

PROTRACTORS

Starrett

Angle Meters

Features:

- Magnetic base frees hands when used on ferrous surfaces.
- Measures any angle for pitch or slope.
- Handy rise, run, angle, and pitch information on back of tool.
- Large, readable scale for accurate readings from 0-90° in any quadrant.

Type: Magnetic



SKU
681-36080

TAPE MEASURES

CRESCENT
Lufkin



700 Series Power Tapes

Features:

- Magnetic end hook is a time-saver for framers, HVAC installers, and more.
- Powerful dual magnets can also serve as a pick-up tool.
- Non-slip co-molded rubber grip.
- Non-slip rubber blade lock button.

Graduations: 1/16 in

No. of Scales: 1

Blade Material: Steel | **Blade Finish:** Yellow Clad

End Type: Magnetic | **Case Material:** ABS

Return Motion: Power Return | **Type:** Single Side Tape

SKU	Blade Length	Blade Width
182-L725MAG	25 ft	1 in

CRESCENT
Lufkin



Hi-Viz® Power Return Tape Measures

Features:

- Textured case for easier grip and increased user comfort.
- Nylon coated blade for extended product life.
- Matte blade finish reduces glare and increased blade legibility.

Graduations: 1/8 in

No. of Scales: 2

Blade Material: Steel

End Type: End Hook

Color: Hi-Viz® Orange, Black

Case Material: ABS

Return Motion: Power Return

Type: Single Side Tape

SKU	Blade Length	Blade Width
182-L625N	25 ft	1 in



Measure Stix™ Steel Measuring Tapes

Features:

- High quality precision steel rule is flat with permanent adhesive back.
- Cut to size with scissors.
- For mounting on workbenches, saw tables, drafting tables, and more.



Graduations: 1/16 in

No. of Scales: 1

Blade Material: High Carbon Steel

Blade Finish: Polyurethane

Color: White

Case Material: Cardboard

Type: Single Side Tape

SKU	Blade Length	Blade Width
681-64919	12 ft	1/2 in

STANLEY



Powerlock® Tape Rules Wide Blade

Features:

- Seven-foot blade standout.
- Mylar® polyester film extends life of entire blade.
- Chrome high-impact ABS case is job site tough.
- Secure blade lock won't creep during measurements.
- Corrosion-resistant Tru-zero end hook for accurate measurements.

Graduations: 1/16 in

No. of Scales: 1

Blade Material: Steel

Blade Finish: Polyester

End Type: Hook

Color: Metallic

Case Material: ABS Plastic

Return Motion: Spring

Type: Single Side Tape

SKU	Blade Length	Blade Width
680-33-425	25 ft	1 in

AIR HOSE REELS



Heavy Duty Spring Retractable Hose Reels

Features:

- The steel guide arm and base are stamped with ribs and gussets and robotically welded to insure maximum strength and lightest possible weight.
- The full flow swivel combines the highest grade seal design and materials with bearing areas to insure maximum service life.
- Declutching arbor virtually eliminates possibility of spring damage due to reverse winding.
- Individually powder coated components offer the maximum protection from premature corrosion.

Hose Length: 50 ft

Height: 20-1/4 in

Width: 7 in

Length: 19-3/4 in

Outlet Size: 1/4 NPT (M)

Inlet Size: 1/2 NPT(F)

SKU	Operating Pressure	Hose ID
523-76500LP	300 psi	3/8 in

FINISHING TOOLS

Pneumatic Angle Grinders



3M™ Pneumatic Angle Grinder

Features:

- Adjustable steel guard can be repositioned for optimal visibility when used with bonded wheels and flap discs.
- Powerful pneumatic motor allows operators to apply significant pressure without interrupting tool performance.
- Lighter weight, smaller size and vibration-reducing side handle for improved operator comfort.
- Wheel auto-balancer helps reduce abrasive vibration.
- 90° head allows for a more comfortable wrist position.
- Rear-mounted exhaust directs air away from workpiece, reducing surface contamination.

Spindle Thread: 5/8 in-11

Power Cap.: 1.5 hp | **Free Speed:** 12,000 RPM

Air Consumption: 40 ft³/min

Control Type: Top Operating Lever for Thumb Activation

Inlet Size: 3/8 in | **Handle Type:** Padded Side Handle

Applications: Blending; Cutting; Finishing; Grinding



SKU	Wheel Dia.
405-638060-88566	4-1/2 in to 5 in

Pneumatic Die Grinders



300 Series Right Angle Die Grinders

Features:

- Ergonomic and lightweight.
- Great for porting, weld breaking/grinding, smoothing edges, de-burring, and polishing.

Air Consumption: 6 CFM

Pressure: 90 psi

Hose Size: 3/8 in

Collet Size: 1/4 in; 6mm



SKU	Power Cap.	Free Speed	Noise Level	Vibration	Length	Housing Material
383-302B	0.33 hp	20000 RPM	90 dB	5.5 m/s ² +/- 1.5 m/s ²	6.93 in	Composite
383-301B	1/4 hp	21000 RPM	90 dB to 92 dB	5.9 m/s ²	5.27 in	Aluminum

Pneumatic Pad Sanders



3M™ Pneumatic Angle Grinder

Features:

- Guard-free design for better visibility and ease-of-use.
- Powerful pneumatic motor handles all your sanding and finishing jobs.
- Lighter weight, smaller size and vibration-reducing side handle for improved operator comfort.
- Wheel auto-balancer helps reduce abrasive vibration.
- High power-to-weight ratio helps operators get more work done in less time.
- 90° head allows for a more comfortable wrist position.
- Rear-mounted exhaust directs air away from workpiece, reducing surface contamination.

Power Cap.: 1.5 hp

Air Consumption: 40 ft³/min

Free Speed: 12,000 RPM | **Inlet Size:** 3/8 in

Control Type: Top Operating Lever for Thumb Activation

Handle Type: Padded Side Handle

Vibration: 3.10 m/s²

Noise Level: 89 dBA



SKU	Spindle Thread	Disc/Pad Diam
405-638060-88577	5/8 in-11	4-1/2 in to 5 in

CORDLESS TOOL BATTERIES & CHARGERS

Batteries, Cordless Tool



FLEXVOLT® 20 V/60 V MAX* Batteries

Features:

- FLEXVOLT® 20V/60V Batteries change voltage when you go from 20V MAX* to 60V MAX* tools.
- 3-LED Fuel Gauge Charge Indicator.
- When used with 20V MAX* tools these batteries provide up to 6X the runtime.



SKU	Batt. Cap.	Batt. Type	For Model
115-DCB606-2	6.0 Ah	Lithium-Ion	Compatible With: 20 V MAX*, 60 V MAX* and 120 V MAX* tools
115-DCB609-2	9 Ah	Lithium Ion	20V, 60V, 120V MAX* all Tools
115-DCB612	12 Ah	Lithium Ion	20 V MAX* Tools; 60 V MAX* Tools; 120 V MAX* Tools



MAX* XR® Batteries

Features:

- Premium XR® Lithium Ion pack provides up to 33% more capacity than standard 20 V MAX* battery packs.
- 3-LED fuel gauge system allows immediate feedback on state of charge.
- No memory and virtually no self-discharge for maximum productivity and less downtime.

Batt. Type: Lithium-Ion

For Model: DeWalt® 20-Volt MAX tools



SKU	Voltage	Batt. Cap.
115-DCB205-2	20 V	5 Ah

CUTTING TOOLS

Band Saws



Powerband Matrix II HSS Bi-Metal Portable Bandsaw Blades



Features:

- Cuts harder materials.
- Fits Black & Decker, Greenlee, Milwaukee, Rockwell, Ridgid, Porter-Cable, Skil, and Unitec machine models.
- For general purpose cutting on portable bandsaw machines.
- Ready-to-use.
- Welded length.

Width: 1/2 in

Thickness: 0.020 in

Cutting Edge Material: HSS

Quantity: 3 per sleeve

SKU	Cutting Length	Teeth Per Inch	Style
681-14601	44-7/8 in	14	Straight
681-14602	44-7/8 in	18	Wavy Tooth
681-14603	44-7/8 in	24	Wavy Tooth
681-15708	44-7/8 in	10; 14	Straight
681-16088	44-7/8 in	14; 18	Variable Tooth



M18 FUEL™ Compact Band Saw Kits

Features:

- POWERSTATE™ brushless motor delivers the fastest cutting speed of any compact band saw.
- Largest Capacity in it's Class: Versatility to cut up to 3-1/4 in X 3-1/4 in material in a single pass.
- CPT Constant Power Technology™: maintains cut speed in the toughest applications for optimal performance.
- Jobsite Armor Technology™: proprietary composite material and crush zone barriers provide long lasting rugged protection.

Batt. Type: Lithium-Ion

Cutting Cap.: 3-1/4 in x 3-1/4 in

Includes:

- (1) Extreme Thick Metal 8/10 TPI Band Saw Blade;
- (2) M18™ REDLITHIUM HIGH OUTPUT™ CP3.0 Battery;
- (1) M18™ & M12™ Rapid Charger

SKU	Voltage	Batt. Cap.
495-2829-22	18 V	3.0 Ah



M18 FUEL™ Deep Cut Band Saws

Features:

- POWERSTATE™ Brushless Motor for increased cutting speed and power through the toughest applications.
- REDLINK PLUS™ Intelligence provides optimized performance and overload protection using total system communication between tool, battery, and charger.
- CPT™ Constant Power Technology maintains cut speed in the toughest applications for optimal performance.
- Jobsite Armor Technology™ is proprietary composite material and crush zone barriers provide long lasting rugged protection.
- All metal direct drive delivers maximum tool life with all metal direct drive gearing system, while requiring less servicing than a chain drive.
- Tool-Free locking adjustable shoe is a button actuated tool-free design allows user to quickly adjust from an extended shoe to no shoe in seconds.
- LED light illuminates work surface for increased accuracy and productivity.
- Dual-Actuation Trigger provides enhanced control and productivity.
- Versatility to cut up to 5 inch by 5 inch material in one pass and adjustable shoe allows for less tool rotation when cutting material above 5 inches.
- Available as tool only or kits.

Batt. Type: M18™ REDLITHIUM™ XC5.0 Extended Capacity

Cutting Cap.: 5 in x 5 in

Speed: 380 SFPM

Length: 21 in

Handle Type: Multi-Grip T-Handle

Includes: (1) M18 FUEL™ Deep Cut Band Saw (Tool Only)(2729-20); (2) M18™ REDLITHIUM™ XC5.0 Extended Capacity Battery Pack (48-11-1850); (1) M18™ and M12™ Multi-Voltage Charger (48-59-1812); (1) Carrying Case; (1) Blade

Wt.: 15 lb

SKU	Voltage	Batt. Cap.
495-2729-22	18 V DC	5.0 Ah

Circular Saws



SteelSlicer™ Metal Circular Saw Blades

Features:

- Use with cordless and corded tools for superior performance and maximum versatility.
- Laser cut vibration slots provide accurate cuts.
- Modified Alternate Tooth Bevel (ATB) provides cool, clean cuts.
- Active Shield™ protective blade coating protects against gumming and corrosion.
- Heat Defense™ premium cermet teeth provide 20x blade life.
- Active Shield™ protective blade coating allows for 40% cooler cuts.
- Heat-treated cermet teeth brazing provides long tool life.
- Options available for medium metal (CSBMM), thick metal (CSBMK), and thin metal (CSBMN).

Grind: Alternate Tooth Bevel (ATB)

Packing Type: Pack

Type: SteelSlicer™ Metal Circular Saw Blade

Arbor Diam: 5/8

SKU	Blade Diam	No. of Teeth
181-CSBMK-842	8 in	42
181-CSBMM-748	7-1/4 in	48
181-CSBMN-756	7-1/4 in	56



M18 FUEL™ 8 in Metal Cutting Circular Saws

Features:

- POWERSTATE™ Brushless Motor generates the power and performance of a 15 A corded metal cutting circular saw.
- REDLINK PLUS™ Intelligence enables communication between batteries and tools, allowing for unmatched levels of performance, protection, and compatibility.
- This saw includes onboard chip collection, dual-action trigger, overload indicator light, electric blade brake, and adjustable depth.
- Compatible with all M18™ batteries.
- Options available for bare tool only or kit with battery pack.

Blade Dia: 8 in

Arbor Dia: 5/8 in

Length: 15.5 in

Includes: (1) M18™ FUEL™ 8" Metal Cutting Circular Saw (2982-20); (1) 8 in 42T Circular Saw Blade; (1) M18™ REDLITHIUM HIGH OUTPUT™ XC8.0 Battery Pack (48-11-1880); (1) M18™ and M12™ Rapid Charger (48-59-1808); (1) Contractor Bag



SKU	Speed	Voltage	Batt. Type
495-2982-21	4000 RPM	18 V DC	Rechargeable Lithium-Ion

Reciprocating Saws



M18 FUEL™ SUPER SAWZALL® Reciprocating Saw Kits

Features:

- Cuts faster than 15A corded reciprocal saws and up to 40% faster than high-voltage reciprocal saws.
- On/Off orbital action.
- 1-1/4 in stroke length.
- Up to 150 cuts per charge.

Length: 3-3/4 in

Includes: M18 FUEL™ SUPER SAWZALL® Reciprocating Saw; M18™ Redlithium™ High output™ HD 12.0 Battery Pack; M18™ and M12™ Rapid Charger; Blade; Contractor Bag



SKU	Stroke Length	Batt. Type	Voltage
495-2722-21HD	1-1/4 in	M18	18 V

FINISHING TOOLS

Grinders



Medium Angle Grinders

Features:

- AC/DC capacity works off welding machines and generators for increased productivity and versatility.
- Rear handle design for greater comfort and control.
- External brush doors for easy servicing.
- Motor provides high speed for fast material removal.
- Sealed ball and roller bearings for extended motor life.
- High power-to-weight ratio for greater efficiency and reduced user fatigue.

Watts: 2250 W

Speed: 8500 RPM

Control Type: Trigger Switch

Spindle Thread: 5/8 in to 11 in

Includes: 7 in Wheel; 7 in Type 27 Guard; 2-position Side Handle; Hex Key; Inner and Outer Flange; DW840 Grinder

SKU	Wheel Dia	Amps
115-DW840	7 in	13 A



Small Angle Grinders

Features:

- 11 Amp AC/DC 11,000 RPM motor designed for faster material removal and higher overload protection.
- Low profile gear case allows tool to fit into tight spaces.
- Quick-Change™ Wheel Release provides easier and quicker wheel removal without the need for a wrench.

Watts: 1,400 W

Speed: 11,000 RPM

Spindle Thread: 5/8 in - 11

SKU	Wheel Dia	Amps	Control Type	Includes
11 Amp				
115-DWE402	4-1/2 in	11 A	Paddle Switch with Lock-Off	2-Position Side Handle; 4-1/2 in One-Touch™ Type 27 Guard
11 Amp with No Lock-On				
115-DWE402N	4-1/2 in	11 A	Paddle Switch with No Lock-On	One-Touch™ Guard; 2-Position Side Handle; Wrench



4-1/2 in Small Angle Grinders

Features:

- Powerful motor provides fast material removal.
- Same metal housing and gearing system as legendary high performance corded grinders.
- Convenient grinders provide ease of changing all accessories without a wrench.
- Tool-free adjustable guard for quick guard installations and adjustments.
- Optimized air intake system provides superior cooling.
- Extremely thin body design provides ultimate user comfort and control.

Speed: 12000 rpm | **Spindle Thread:** 5/8 in-11 | **Amps:** 11 A

SKU	Control Type	Includes
495-6142-30	Lock-On Paddle Switch	Angle grinder (6142-30); Spanner Wrench; Type 27 Guard; Side Handle; Grinding Wheel; Contractor Bag
495-6141-30	Lock-On Paddle Switch	Angle grinder (6146-30); Spanner Wrench; Type 27 Guard; Side Handle; Grinding Wheel; Flange; Contractor Bag
495-6141-31	No-Lock Paddle Switch	Angle grinder (6146-31); Spanner Wrench; Type 27 Guard; Side Handle; Grinding Wheel; Flange; Contractor Bag



5 in Corded Angle Grinders

Features:

- Electronic clutch extends tool life and prevents bind-up.
- Tool-free accessory change without a wrench for all accessories.
- Advanced airflow system maximizes airflow and reduces debris ingress, improving motor life and performance.
- Soft start allows maximum control at start-up.
- Overload protection maximizes motor life.
- Constant Power Technology™ maintains constant speed under load.
- Tool-free adjustable guard provides quick guard installations and adjustments.
- Anti-vibration side handle reduces vibration, increasing user comfort during extended use.
- Options available with paddle switch lock-on/no lock-on, slide lock-on/no lock-on, or trigger grip lock-on/no lock-on.

Test & Approvals: Complies with OSHA and UL Requirements

Watts: 1,400 W | **Speed:** 11,000 RPM | **Control Type:** Trigger; No-Lock

Includes: (1) 11 A 5 in Corded Small Angle Grinder, Trigger-Grip, AC/DC, No-Lock; (1) Side Handle; (1) Spanner Wrench; (1) Type 27 Guard; External Brush Doors

SKU	Spindle Thread	Wheel Dia	Amps
495-6121-31A	5/8 in-11	5 in	11 A



6 in Corded Angle Grinders

Features:

- Electronic clutch extends tool life and prevents bind-up.
- Tool-free accessory change without a wrench for all accessories.
- Advanced airflow system maximizes airflow and reduces debris ingress, improving motor life and performance.
- Soft start allows maximum control at start-up.
- Overload protection maximizes motor life.
- Constant Power Technology™ maintains constant speed under load.
- Tool-free adjustable guard provides quick guard installations and adjustments.
- Anti-vibration side handle reduces vibration, increasing user comfort during extended use.
- Options available with paddle switch lock-on/no lock-on or slide lock-on.

Test & Approvals: Complies with OSHA and UL Requirements

Watts: 2,100 W

Speed: 9,000 RPM

Control Type: Paddle; No Lock-On

Spindle Thread: 5/8 in-11

Includes: (1) 13 A 6 in Small Angle Grinder, Paddle, No-Lock; (1) Flange; (1) Side Handle; (1) Spanner Wrench; (1) Type 27 Guard

SKU	Wheel Dia	Amps
495-6161-31	6 in	13 A



7 in / 9 in Large Corded Angle Grinders

Features:

- Spiral bevel gearing optimizes performance and durability.
- Ergonomic handles, angled rear and 3-position side handle promote natural hand positions and increase user comfort.
- 2-finger trigger switch offers convenience for continuous-use applications, available with and without lock-on feature.
- Tool-free burst resistant guard allows the user to quickly adjust the guard without the use of a tool.
- 9-ft 2-wire fixed rubber cord, durable construction for longer tool life.

Test & Approvals: Complies with OSHA and UL Requirements

Speed: 6,000 RPM

Control Type: 2-Finger Lock-On Trigger Switch

Spindle Thread: 5/8 in-11

Includes: (1) 15 A 7 in/9 in Large Angle Grinder with Lock-on (Bare Tool Only) (6088-30); (1) Flange; (1) Spanner Wrench; (21) Type 27 Guard

SKU	Wheel Dia	Amps
495-6088-30	7 in; 9 in	15 A



20V MAX* Lithium Ion Grinder



Features:

- High power for cutting and grinding applications.
- Quick-Change™ Wheel Release allows for tool free wheel changes.
- Tool-free guard allows for quick and easy guard adjustments/positioning.
- two-finger trigger switch with lock-off button.
- Two-position side handle.

Batt. Type: Lithium Ion

Length: 14 in

Control Type: Trigger

Handle Type: 2-Position Side Handle

Includes: (1) DCG412; (1) Hex Wrench; (1) Type 27 Grinding Guard; (1) 2-Position Side Handle; (1) 5 in x 1/4 in T27 Metal Grinding Wheel

SKU	Speed	Wt.	Spindle Thread
115-DCG412B	8,000 RPM	4.07 lb	5/8 in to 11



FLEXVOLT® 60V MAX* Cordless Grinders with Kickback Brake

Features:

- 13 Amp motor equivalent power.
- No-load speed of 9,000 RPM for applications with 6 inch grinder wheels.
- Kickback brake engages when a pinch, stall, or bind-up event is sensed, it engages with maximum force to quickly stop the wheel, reduce the movement of the grinder, and shut the grinder off.
- Anti-rotation E-CLUTCH® activates in less than a tenth of a second when a pinch/stall is detected, shutting down the motor.
- Options available for bare tool only or kits with battery.

Batt. Type: Lithium Ion

Speed: 9,000 RPM

Control Type: Trigger

Handle Type: Rat Tail

Spindle Thread: 5/8in-11

SKU	Includes
115-DCG418X1	(1) DCG418; (1) 20V/60V MAX* FLEXVOLT® 9.0 Ah Battery (DCB609); (1) Charger; (1) Side Handle; (1) 4-1/2 in Type 27 Guard; (1) 6 in Type 27 Guard; (1) Wrench; (2) Flanges; (1) Kit Bag
115-DCG418X2	(1) DCG418; (2) 20V/60V MAX* FLEXVOLT® 9.0 Ah Batteries (DCB609); (1) Charger; (1) Side Handle; (1) 4-1/2 in Type 27 Guard; (1) 6 in Type 27 Guard; (1) Wrench; (2) Flanges; (1) Kit Bag
115-DCG418B	(1) DCG418; (1) Wrench; (2) Flanges; (1) Side Handle; (1) 4-1/2 in Type 27 Guard; (1) 6 in Type 27 Guard



M18 FUEL™ 4-1/2 in and 5 in Cordless Angle Grinders

Features:

- POWERSTATE™ brushless motor, purposely built for the M18 FUEL™ 4-1/2 in and 5 in angle grinder, delivers 8,500 RPM to provide the power to complete the toughest grinding and cutting applications.
- REDLINK PLUS™ Intelligence enables communication between batteries and tools, allowing for unmatched levels of performance, protection, and compatibility.
- Tool-free accessory changes with Integrated FIXTEC Nut Technology.
- Electronic clutch for kickback protection.
- Anti-vibration side handle for increased user comfort and safety.
- Overload protection to maximize motor life.
- Compatible with all M18™ batteries.
- Options available for bare tool only or kit with 2 M18™ REDLITHIUM™ HIGH OUTPUT™ XC6.0 battery packs.

Voltage: 18 V DC

Speed: 8,500 RPM

Spindle Thread: 5/8 in-11

SKU	Batt. Type	Handle Type	Includes
Paddle Switch; No-Lock			
495-2880-20	Rechargeable Lithium-Ion	Back Body Grip; Anti-Vibration Side Handle	(1) M18 FUEL™ 4-1/2 in/5 in Grinder Paddle Switch, No-Lock (2880-20); (1) Back Flange; (1) Flange Nut; (1) Side Handle; (1) Type 27 Guard; (1) Type 1 Clip-On Guard; (1) Wrench
Paddle			
495-2880-22	Lithium-Ion	Straight	(1) M18 FUEL™ 4-1/2 in/ 5 in Grinder Paddle Switch, No-Lock; (2) M18 REDLITHIUM™ HIGH OUTPUT™ XC6.0 Battery Pack; (1) M18™ & M12™ Rapid Charger; (1) T27 Guard; (1) T1 Clip-On Guard; (1) Side Handle; (1) Wrench; (1) Back Flange; (1) Flange Nut; (1) Contractor Bag



M18 FUEL™ 4-1/2 in to 6 in Cordless Braking Grinders

Features:

- POWERSTATE™ brushless motor, purposely built for the M18 FUEL™ 4-1/2 inch/6 inch braking grinder, to provide the power and performance of a 13 A corded grinder.
- REDLINK PLUS™ Intelligence ensures optimal performance and provides overload protection to prevent damage to the tool and battery during heavy applications while still maintaining compatibility across the entire M18™ System.
- Rapid Stop braking feature stops all accessories in 3 seconds or less.
- Tool-free accessory changes using the FIXTEC nut and tool-free guard adjustments without a wrench for increased productivity.
- Metal housing and gearing system provides legendary durability.
- Compatible with all M18™ batteries.
- Available as tool only or kits, (2980 Paddle Switch No-Lock) (2981 Slide Switch Lock-On).

Batt. Type: Lithium-Ion

Speed: 9000 RPM

Length: 12.45 in

Handle Type: Back Body Grip; Side Handle

Spindle Thread: 5/8 in-11

Voltage: 18 V DC

SKU	Control Type	Includes
495-2980-22	Paddle Switch; No-Lock	(1) M18 FUEL™ 4-1/2 in to 6 in Braking Grinder Paddle Switch, No-Lock (2980-20); (2) M18 REDLITHIUM™ HIGH OUTPUT™ XC6.0 Battery Packs (48-11-1865); (1) M18™ and M12™ Rapid Charger (48-59-1808); (1) Back Flange; (1) Contractor Bag; (1) FIXTEC Nut; (1) Side Handle; (1) Type 27 Guard; (1) Wrench
495-2980-20	Paddle Switch; No-Lock	(1) M18 FUEL™ 4-1/2 in to 6 in Braking Grinder Paddle Switch, No-Lock (2980-20); (1) Back Flange; (1) FIXTEC Nut; (1) Side Handle; (1) Type 27 Guard; (1) Wrench
495-2981-20	Slide Switch; Lock-On	(1) M18 FUEL™ 4-1/2 in to 6 in Braking Grinder, Slide Switch, Lock-On (2981-20); (1) Back Flange; (1) FIXTEC Nut; (1) Side Handle; (1) Type 27 Guard; (1) Wrench



Heavy-Duty Die Grinders

Features:

- Versatile chuck accepts 1/4 inch and 1/8 inch collets for greater utility.
- Features all ball and roller bearings for durability.
- Kickback brake safety feature.
- 3-prong, double insulated electrical protection cords.
- Used for carving or abrasive, cutting-off, grinding, polishing, sanding, and wire brushing applications.

Amps: 11 Amps

Includes: (1) 11 A Die Grinder (5194); (1) 11/16 in Open End Wrench; (1) 1/2 in Open End Wrench; (1) 1 in Open End Wrench



SKU	Control Type	Speed	Wheel Diam
495-5196	Trigger Lock-On Switch	14,500 RPM	2 in



M18 FUEL™ Cordless Die Grinders

Features:

- Milwaukee® POWERSTATE™ Brushless Motor provides more power, more run-time, and longer life.
- REDLINK PLUS™ Electronic Intelligence enables advanced communication between your batteries and tools, allowing for unmatched levels of performance, protection, and productivity.
- The Milwaukee® REDLITHIUM™ Battery Pack is the most durable pack on the market delivering more run-time, power and longer battery life.

Collet Size: 1/4 in

Power Source: Cordless

Length: 15.5 in

SKU	Voltage
495-2939-20	18V DC



1-1/2 in Die Grinders

Features:

- Motor provides high power and speed for all 1-1/2 in grinding applications.
- AC/DC capacity works off welding machines and generators for increased productivity and versatility.
- Precision 1/4 in collet securely holds all proper accessories (1/8 in reducing sleeve as optional accessory).

Watts: 350 W

Amps: 4.2 A

Speed: 25,000 RPM

Collet Size: 1/4 in

Wheel Diam.: 1-1/2 in

Includes: (2) Wrenches; Collet

SKU	Control Type
115-DWE4887N	Paddle; No-Locking
115-DWE4887	Paddle Switch with Lock-On Button

MULTI-PURPOSE POWER TOOLS

Combo Kits Cordless



20V MAX* Lithium Ion Grinder Tool Kits

Features:

- Provides high-power for cutting and grinding applications.
- Quick-Change™ Wheel Release allows for tool-free wheel changes without the need for a wrench.
- Tool-free guard allows for quick and easy guard adjustments/positioning.
- 2-finger trigger switch (w/ lock-off button) allows for convenient activation and easier gripping.
- 2-position side handle offers greater control, comfort and versatility.

Includes: DCG412 Grinder; (2) DCB205 20V MAX* XR Premium Li-Ion Battery; Fast Charger; Spanner Wrench; 5 inch Type 27 Grinding Guard; 2-Position Side Handle; Contractor Bag

SKU	Speed	Batt. Cap.:
115-DCG412P2	7000 RPM	5 Ah

EAR PROTECTION

Earplugs



3M™ E-A-R™ Classic™ Earplugs



Features:

- Flame-retardant.
- Moisture resistant.
- Shape prevents shifting and keeps effectiveness of noise seal constant.
- Slow recovery PVC foam provides comfort with low pressure.

Color: Yellow

Quantity: 200 pair per box

Noise Reduction: 29 dB

Body Material: Polymer Foam

SKU	Type	Packing Type
247-310-1001	Uncorded	Pillow Pack
247-311-1101	Corded	Poly Bag

FALL PROTECTION

Lanyards



Key Caddy

Features:

- Heavy duty.
- Returns keys and other articles automatically.
- With regular belt clip.

SKU	Length	Connection Type
681-63135	21 in	Key Ring



HAND PROTECTION

Gloves



Sasquatch® Premium Leather Driver Work Gloves

Features:

- Made with a premium grade split leather.
- Sewn with a rugged heat-resistant Kevlar® aramid thread.
- Premium leather provides high abrasion resistant properties.
- Features comfortable keystone thumb pattern for ease of movement and long time wear.
- Touchscreen friendly gloves.

Test & Approvals: ANSI Abrasion Level 6; ANSI Contact Heat Level 2; ANSI Puncture Level 3

Lining: Unlined

Style: Keystone Thumb Style

Cuff Style: Open; Slip-On

Resistance: Abrasion; Contact Heat; Puncture

SKU	Size Group	Material
135-3430M	Medium	Sasquatch® Premium Side A Grade Leather
135-3430XL	X-Large	Sasquatch® Premium Side A Grade Leather



1871 Multi-Task Gloves

Features:

- Supple and durable full-grain Goat palm and back.
- Exclusive reverse-scalloped Boarhide™ cuff for protection against sparks and spatter.
- Reinforced thumb saddle for extended durability.
- Boarhide™ palm patch for extended wear and protection.
- Unlined and padded palm with wool insulated back.
- Ovis-Hide™ premium sheep grain pulse protector for added safety.
- Sewn with Kevlar® thread.
- Complimentary 3 inch carabineer to keep gloves together with exclusive Caiman® loops on each pair.
- Kontour™ exclusive 3-dimensional, pre-curved fingers, and form-fitting design for ultimate fit, comfort, and dexterity.

Style: Leather Palm/Back; Palm Patch; Reinforced Thumb Saddle; Wool Insulated Back

Cuff Style: Reverse-Scalloped



SKU	Size Group	Material
607-1871-M	Medium	Boarhide™ Leather; Kevlar® Thread; Ovis-Hide™ Premium Sheep Grain Leather; Wool
607-1871-L	Large	Boarhide™ Leather; Kevlar® Thread; Ovis-Hide™ Premium Sheep Grain Leather
607-1871-XL	X-Large	Boarhide™ Leather; Kevlar® Thread; Ovis-Hide™ Premium Sheep Grain Leather



1810 revolution® Cow Grain Unlined Palm 2-Layer Insulated Back MIG/Stick Welding Gloves

Features:

- Constructed with TUFF-STEER™ heavy cow split leather and Kontour™ form-fitting design.
- Two-layer insulated back for protection from radiant heat.
- Top grain pigskin leather forchettes and finger tips.
- Patented double-stitched palm padding and wear-patch.
- Unlined, padded, patches, and reinforced palm for added protection and comfort.
- Large pulse protector.
- Sewn with Dupont™ Kevlar® thread.
- Complimentary 3 inch carabiner to keep gloves together with exclusive Caiman® loops on each pair.

Style: 1810 revolution® Cow Grain Unlined Palm 2-Layer Insulated Back Welding Gloves | **Cuff Style:** Gauntlet | **Color:** Gold; White



SKU	Size Group	Material
607-1810-L	Large	Cow Grain Leather; Dupont™ Kevlar® Thread; Fleece/Foam Insulation; Pigskin Leather
607-1810-XL	X-Large	Cow Grain Leather; Dupont™ Kevlar® Thread; Fleece/Foam Insulation; Pigskin Leather



1828 revolution® Cow Grain Unlined TIG/MIG Welding Gloves

Features:

- Constructed with TUFF-STEER™ grain leather and Kontour™ form-fitting design.
- Top grain leather fourchettes and finger tips.
- Unlined, patches, padded, and reinforced palm and thumb saddle for added protection and comfort.
- Patented double-stitched palm padding and wear-patch.
- Sewn with Dupont™ Kevlar® thread.
- Complimentary 3 inch carabiner to keep gloves together with exclusive Caiman® loops on each pair.

Lining: Unlined

Style: 1828 revolution® Cow Grain Unlined TIG/MIG Welding Gloves

Cuff Style: Hook-and-Loop

Color: Gold; Tan



SKU	Size Group	Material
607-1828-L	Large	Cow Grain Leather; Dupont™ Kevlar® Thread
607-1828-XL	X-Large	Cow Grain Leather; Dupont™ Kevlar® Thread



1878 21-in FR Insulated MIG/Stick Welding Gloves

Features:

- 21-inch glove with heavy-duty padding on the forearm and elbow for comfort.
- Super supple Genuine American Deerskin tanned in USA.
- Genuine leather heat shield patch, reinforced palm, cuff and lean-on patch.
- Sock-lined FR cotton fleece insulated.
- Boarhide™ leather pull-strap.
- Sewn with Kevlar® thread.
- Complimentary 3 inch carabiner to keep gloves together with exclusive Caiman® loops on each pair.
- Exclusive 3-dimensional, pre-curved fingers, and form-fitting design for ultimate fit, comfort, and dexterity.

Lining: Full Sock-Insulation with Flame-Resistant (FR) Fleece

Style: Flame Resistant; Form-Fitting Kontour™ Original Design; Kevlar® Stitched; Lined/Insulated; Patches

Cuff Style: Gauntlet

Color: Tan; Black



SKU	Size Group	Material
607-1878-5	Large	Boarhide; Deerskin; Kevlar® Thread

HEAD/FACE PROTECTION

Faceshields & Visors



Visors

Features:

- Clear or shaded available.
- Durable and high-performance.

Test & Approvals: ANSI-Z87.1 2003; OSHA

Type: Visor

Binding: Aluminum Bound

Used With: Jackson Safety® Head Gear/Cap Adaptors

Style: Bound Visor

Length: 15-1/2 in

Height: 9 in

Thickness: 0.040 in



SKU	Lens Coating/Shade	Lens Material	Color
101-3440-B-CL	Clear	PETG	Clear
101-3465-5	Shade 5.0	PETG	Shade 5



MAXVIEW™ Series Premium Face Shields with Headgear

Features:

- 370 Speed Dial™ ratcheting headgear system provides easy grab-easy turn adjustments for superior comfort and fit.
- Lightweight design for total comfort and all-day use, meets ANSI Z87.1+ and CSA.
- 2 inch larger window ensures maximum protection and panoramic view.
- Detents keep window firmly in the up or down position until manually adjusted.
- Framed side and chin area provide added protection.

Used With: Safety Glasses; Hard Hats

Style: Partial Crown with Chinguard

Color: Clear

Length: 13-1/4 in

Height: 9 in

Thickness: 0.04 in

Model: MAXVIEW™



SKU	Lens Coating/Shade	Lens Material
138-14200	Uncoated; Clear	Polycarbonate



DP4™ Series

Multi-Purpose Faceshields

Features:

- The shield curves naturally to fit facial contours; ensuring reliable protection from splash, particles, and flying debris.
- Rugged, polycarbonate shield is impact and splash resistant.

Test & Approvals: ANSI Z87.1-2015; CSA Z94.3-2015

Style: Dual-Purpose

Color: Clear; SH5 Green

Length: 12.125 in

Height: 9 in

Thickness: 0.060 in

Model: DP4™ Series



SKU	Lens Coating/Shade	Lens Material
851-S32151	Anti-Fog; Clear	Polycarbonate; UV/IR

Welding Helmet Parts & Accessories



3M™ Speedglas™ Welding Helmet Inside Protection Plates

Features:

- Designed to protect the auto-darkening filter from spark and spatter.
- Suitable for Utility and all 9000 or 9002 series Speedglas™ welding helmets.

Resistance: Scratch

Material: Polycarbonate

Color: Gray

SKU	Style	Lens Coating/ Shade	Type
711-04-0280-00	Rectangular	Clear	Inside Protection Plate
711-04-0290-00	Rectangular	Clear	Outside Protection Plate



Cover Lens

Features:

- Convenient protective cover lens is resistant to abrasion, pitting, spatter, chemicals and solvents.
- Optically correct and balanced.
- Provides superior welding lens protection.

Test & Approvals: OSHA

Resistance: Scratch; Static

Color: Clear



SKU	Window Size	Material
901-SP-1	2 in x 4.25 in	70% CR-39 Plastic
901-SP-2	2 in x 4.25 in	100% CR-39 Plastic
901-SP-35	4-1/2 in x 5-1/4 in	50% CR-39 Plastic
901-SP-45	5-1/4 in x 4-1/2 in	CR-39 Plastic

Welding Helmets



3M™ Speedglas™ 100 Welding Helmets

Features:

- Auto-Darkening Filter 100V is good for Stick, MIG and most TIG welding processes.
- User selectable dark shades 8 through 12.
- Three user-selectable sensitivity levels for reliable arc detection and excellent optical quality.
- Shade 3 in the light state.

Test & Approvals: ANSI Z87.1-2003; CSA Z94.3

Window Size: 3.66 in x 1.73 in

Material: Nylon

Suspension: Ratchet



SKU	Lens Coating/Shade	Color
711-07-0012-31BL	3; 8 to 12	Black



3M™ Speedglas™ Welding Helmet

Features:

- All new headgear makes this helmet extremely comfortable and versatile.
- Sensitivity adjustment allows use with all Stick, MIG and TIG processes.
- Also has grinding and torch cutting modes.

Window Size: 4.2 in x 2.1 in

Material: PPA

Suspension: Ratchet



SKU	Lens Coating/Shade	Color
711-06-0100-20SW	8 to 13; Shade 5	Black/Silver



3M™ Speedglas™ Welding Helmet 9100

Features:

- Includes 9100XXi Auto-Darkening Filter that allows better color recognition.
- Ergonomic adjustable head suspension provides increased comfort, helmet stability and weight distribution.
- Helmet can be used for Stick, MIG, and TIG welding processes.

Test & Approvals: ANSI Z87.1-2003

Window Size: 2.8 in x 4.2 in

Material: High-Density Polyethylene

Suspension: Ratchet



SKU	Lens Coating/Shade	Color
711-06-0100-30ISW	5; 8 to 13; Shade 3 Light State	Black



3M™ Speedglas™ Heavy-Duty Welding Helmet G5-01 w ADF 65-01 and 3M™ Adflo™ High-Altitude PAPR Assembly

Features:

- Protection against radiation, sparks and spatter, from a high-coverage welding helmet design that also offers expanded coverage options.
- View your work with 3M™ Speedglas™ Natural Color Technology – now available with variable color option in the dark state.
- Effective respiratory protection, with options to provide the highest exposure reduction available in a powered air respiratory system (APF 1000).
- Individualize your helmet with different accessory configurations, while you use the new helmet controls to adjust the respiratory airflow to your preferences.

Window Size: 2.8 in x 4.3 in

Material: Polyphthalamide

Suspension: Adjustable



SKU	Lens Coating/Shade	Color
711-46-1101-30I	Shade 5; 8 to 14	Black



Graphic Premium Auto-Darkening Welding Helmets

Features:

- Bold new graphics keep you looking sharp while performing at your best.
- Features exclusive 370™ Speed Dial ratcheting headgear system.
- Ergonomically balanced to reduce stress and fatigue.
- Powered by solar technology and one CR2032 replaceable lithium battery.
- Available in Bead Demon, Freedom, Gray Matter, Hellfire, Reapers n' Roses, and Six Feet Under graphic styles.

Window Size: 3.94 in x 2.36 in

Size of Cartridge: 5.25 in x 4.5 in

Material: Nylon

Suspension: Ratchet



SKU	Lens Coating/Shade	Color
138-47103	4/5 to 13	Rustic Metal; Red; White; Blue



Translight™ + 555 Premium Auto Darkening Helmet



Features:

- Translight™ shell has a sleek modern design.
- Switching speeds of 1/25,000 second increase comfort and keep eyes less fatigued.
- Proprietary external shade adjuster finely tunes in .2 increments or +/- 1 full shades for unsurpassed visual precision.
- ADF filter scores a perfect 1/1/1/1 optical clarity rating.
- Engineered with the latest True Color technology to deliver a crystal-clear view of the weld.
- 4 arc sensors provide superior coverage even when welding out of position.
- Super lightweight design is ergonomically balanced to reduce stress and fatigue.
- 12.47 square inches of viewing provide maximum peripheral vision.
- External grinding button allows users to switch modes with ease.
- Includes patented 370 Speed Dial ratcheting headgear system.
- Powered by solar technology and two CR2032 replacement batteries.

Window Size: 3.23 in x 3.86 in

Size of Cartridge: 4.5 in x 5.25 in

SKU	Lens Coating/Shade	Material	Color
138-46250	3; 5 to 14	Nylon	Black

HEAT STRESS PROTECTION

Activity Drinks



G Series O2 Perform® Thirst Quencher Instant Powders



Features:

- Hydrates with electrolytes that help them replace the carbs, electrolytes and fluids they lose when they sweat.
- Carbohydrates help stimulate rapid fluid absorption and fuel the active body.

Quantity: 32 EA/CA

SKU	Package Yield	Capacity Vol.	Flavor	Packing Type
308-03944	2.5 gal	21 oz	Fruit Punch; Lemon-Lime; Orange; Frost Riptide Rush	Pack
308-03969	2.5 gal	21 oz	Lemon-Lime	Pouch
308-03970	2.5 gal	21 oz	Orange	Pouch
308-33673	2.5 gal	21 oz	Frost Riptide Rush	Pouch
308-33677	2.5 gal	21 oz	Glacier Freeze	Pouch
308-33691	2.5 gal	21 oz	Fruit Punch	Pouch



G Series O2 Perform® Thirst Quencher Ready- to-Drink Cans



Features:

- The most scientifically researched and game-tested way to replace electrolytes lost in sweat.
- Hydrates better than water.

Quantity: 24 CN/CA

SKU	Package Yield	Capacity Vol.	Flavor
308-00901	11.6 fl oz	11.6 fl oz	Lemon-Lime
308-00902	11.6 fl oz	11.6 fl oz	Orange
308-30903	11.6 fl oz	11.6 fl oz	Fruit Punch



G Zero Powder Sticks



Features:

- Gatorade® G Zero in convenient single serve sticks.
- Sugar-free G Zero packs are designed for those on the go, simply add to a 20 oz bottle of water.
- Gatorade® G Zero is an ideal electrolyte solution for those interested in maintaining a ketosis state.

SKU	Package Yield	Capacity Vol.	Flavor	Quantity
308-04490	16.9 oz	0.10 oz	Orange	120 per case
308-04457	16.9 oz	0.10 oz	Glacier Freeze	120 per case
308-04713	16.9 oz	0.10 oz	Fruit Punch	120 per case
308-04712	16.9 oz	0.10 oz	Grape	120 per case
308-05138	16.9 oz	0.10 oz	Assorted: Grape; Fruit Punch; Orange	300 per case



Liquid Concentrates

Features:

- Drink mixes have a blend of electrolytes and carbohydrates to help speed hydration and restore energy.
- Caffeine-free.
- Mix with water per instructions.

Quantity: 4 BO/CA



SKU	Package Yield	Capacity Vol.	Flavor
308-03955	6 gal	1 gal	Orange
308-03984	6 gal	1 gal	Lemon-Lime
308-33305	6 gal	1 gal	Fierce® Grape
308-33977	6 gal	1 gal	Fruit Punch



Powder Sticks

Features:

- Powdered mix contains the same electrolyte formula found in the original Gatorade.
- The refreshing choice when you need to replace electrolytes lost from sweat while performing rigorous physical activity.
- Take these convenient packets with you anywhere

Quantity: 80 per case



SKU	Package Yield	Capacity Vol.	Flavor
308-04702	20 oz	1.23 oz	Fruit Punch
308-04701	20 oz	1.23 oz	Orange
308-04700	20 oz	1.23 oz	Lemon Lime



Propel® Instant Powder Packets

Features:

- Convenient, individual packets contain the same level of electrolytes as Propel unflavored water plus Vitamin C and Vitamin E.
- They have enough electrolytes to replace what you put out and keep you moving.
- Simply pour powder into your water, mix and drink to refresh yourself.

Quantity: 120 per case

SKU	Package Yield	Capacity Vol.	Flavor
308-01087	16.9 oz	0.08 oz	Berry
308-01088	16.9 oz	0.08 oz	Kiwi Strawberry
308-01097	16.9 oz	0.08 oz	Grape



EverLyte™ Ready-To-Drink

Features:

- Designed to restore important mineral salts and fluids lost through dehydration, physical exertion, and heat stress.
- No added coloring, preservatives, or artificial sweeteners.
- Low sodium and gluten free.

Packing Type: Pouch

Quantity: 24 EA/CA



SKU	Package Yield	Capacity Vol.	Flavor
690-159030860	6 oz	8 oz	Fruit Punch
690-159030861	6 oz	8 oz	Grape
690-159030862	6 oz	8 oz	Lemon-Lime



Fast Pack® Drink Mixes

Features:

- Portable, lightweight.
- Tastes great and keeps you hydrated.

Packing Type: Pack

Quantity: 200 per case

Package Yield: 6 oz

Capacity Vol.: 0.6 fl oz



SKU	Flavor
690-159015300	Mixed Berry
690-159015301	Cherry
690-159015302	Grape
690-159015304	Orange
690-159015305	Fruit Punch
690-159015306	Tea
690-159015309	Tropical Cooler
690-159015310	Cool Citrus



Liquid Concentrate

Features:

- Liquid concentrate can be pre-mixed to keep large crews hydrated in harsh conditions.
- Jugs of liquid concentrate can be set beside water fountains, coolers at sporting events, or work sites, allowing people to mix their own drinks.

Packing Type: Bottle

Quantity: 6 per case

Package Yield: 5 gal

Capacity Vol.: 54 oz



SKU	Flavor
690-159030319	Strawberry Lemonade
690-159030320	Mixed Berry
690-159030321	Cherry
690-159030322	Grape
690-159030323	Lemonade
690-159030324	Orange
690-159030325	Fruit Punch
690-159030328	Lemon-Lime
690-159030329	Tropical Cooler
690-159030330	Cool Citrus



Powder Packs

Features:

- Powder Pack mixes quickly and easily with water.
- Helps replenish fluids and electrolytes to prevent dehydration.

Packing Type: Pack

Quantity: 32 per case

Package Yield: 2.5 gal

Capacity Vol.: 23.83 oz



SKU	Flavor
690-159016041	Orange
690-159016042	Fruit Punch
690-159016043	Lemon-Lime
690-159016044	Fruit Punch; Grape; Lemon-Lime; Orange
690-159016046	Grape
690-159016048	Mixed Berry



Qwik Stik® ZERO Sugar

Features:

- Great-tasting sugar-free electrolyte replacement.
- Ideal for diabetics and carb-conscious consumers.

Packing Type: Pack

Quantity: 500 per case

SKU	Package Yield	Capacity Vol.	Flavor
690-159060099	20 oz	0.11 oz	ZERO Sugar Strawberry Lemonade
690-159060100	20 oz	0.11 oz	ZERO Sugar Orange
690-159060101	20 oz	0.11 oz	ZERO Sugar Mixed Berry
690-159060102	20 oz	0.11 oz	ZERO Sugar Fruit Punch
690-159060103	20 oz	0.11 oz	ZERO Sugar Lemonade
690-159060106	20 oz	0.11 oz	ZERO Sugar Lemon-Lime
690-159060107	20 oz	0.11 oz	ZERO Sugar Grape
690-159060109	20 oz	0.11 oz	ZERO Sugar Cool Citrus
690-159060119	20 oz	0.11 oz	ZERO Sugar Fruit Punch; ZERO Sugar Mixed Berry; ZERO Sugar Orange; ZERO Sugar Strawberry Lemonade
690-159060200	10 oz	0.06 oz	ZERO Sugar Orange
690-159060201	10 oz	0.06 oz	ZERO Sugar Mixed Berry
690-159060202	10 oz	0.06 oz	ZERO Sugar Fruit Punch
690-159060204	10 oz	0.06 oz	ZERO Sugar Grape
690-159060205	10 oz	0.06 oz	ZERO Sugar Lemon-Lime



QwikServ® Powder Concentrate

Features:

- Designed to restore important mineral salts and fluids lost through dehydration, physical exertion and heat stress.
- Low sodium and necessary potassium.

Packing Type: Pack | **Quantity:** 96 per case

Package Yield: 16.9 oz | **Capacity Vol.:** 1.26 oz



SKU	Flavor
690-159060900	Orange
690-159060901	Fruit Punch
690-159060902	Lemon-Lime
690-159060904	Grape



Squeeze® Freezer Pops

Features:

- Great way to cool down the body during hot or fatiguing work situations.
- Just freeze and serve to administer a tasty way to provide electrolytes to any work crew.
- Formulated to be absorbed significantly faster than water, allowing the body to replenish electrolytes and minerals for proper hydration.

Flavor: Cherry; Grape; Lemon-Lime; Mixed Berry; Orange

Packing Type: Tube | **Quantity:** 150 EA/CA

SKU	Package Yield	Capacity Vol.
690-159200201	3 oz	3 oz



Squwincher® ZERO Freezer Pops

Features:

- Great way to cool down the body during hot or fatiguing work situations.
- Just freeze and serve to administer a tasty way to provide electrolytes to any work crew but without the sugar.
- Formulated to be absorbed significantly faster than water, allowing the body to replenish electrolytes and minerals for proper hydration.

Flavor: Dragon Fruit; Mixed Berry; Orange; Punch; Watermelon

Packing Type: Tube

SKU	Package Yield	Capacity Vol.	Quantity
690-159200231	3 oz	3 oz	150 EA/CA



ZERO Liquid Concentrate

Features:

- Perfect solution for diabetics or diet conscious.
- Zero Carbs & Zero Calories.

Packing Type: Bottle

Quantity: 6 per case

Package Yield: 5 gal

Capacity Vol.: 54 oz



SKU	Flavor
690-159050106	Mixed Berry
690-159050102	Fruit Punch
690-159050103	Grape
690-159050104	Lemon-Lime
690-159050107	Orange

RESPIRATORY PROTECTION

Disposable Respirators



3M™ Particulate Welding Respirator

Features:

- Disposable respirator features electrostatically charged microfibers designed for ease of breathing.
- Protective layers of welding web are flame resistant.
- Cool Flow™ exhalation valve reduces heat build up to keep the wearer more comfortable.
- Cake-resistance carbon filter material provides longer respirator life.
- Two straps provide a custom and secure fit.



Test & Approvals: ASTM D2859-96; Meets NIOSH 42 CFR 84 N95 Requirements, TC-84A-0454; OSHA APF 10

Size Group: One Size

Resistance: Gas/Vapor Particulates; Non-Oil Aerosol; Welding Fumes

Usage: Brazing; Soldering; Torch Cutting; Welding

Color: White

Suspension: Stapled; Braided Head Band Straps

Quantity: 10/bx

Includes: 3M™ Cool Flow™ Valve; Carbon Filter Material; Welding Web

SKU	Protected Area	Filtration Grade
142-8515	Half Facepiece with Adjustable Nose Clip	N95

ARC GOUGING

Arc Gouging Electrodes



DC Copperclad Gouging Electrodes

Features:

- Full synthetic graphite.
- Superb arc starting and stability.

Length: 12 in

Model Type: Pointed

Coating: Copper

SKU	Amps	Dia.	Thickness
900-22-043-003X	300 A - 400 A	1/4 in	1/4 in
900-22-063-003X	450 A - 600 A	3/8 in	3/8 in

FILLER METALS

MIG Welding Wires



ER70S-6 MIG Premium Welding Wires

Features:

- Mild steel welding wire that contains high levels of manganese and silicon which produces high quality welds when used on dirty, oily or rusty steel.
- The high silicon content increases the fluidity of the weld pool, creating a smoother bead appearance resulting in minimal post-weld grinding.
- Engineered to provide porosity-free, x-ray quality welds at the highest tensile strength of all the plain carbon steel wires.



Test & Approvals: AWS A5.18:05; CSA W48:14

Dia.: 0.035 in

Tensile Strength: 85,000 psi

Material: Carbon Steel

SKU	Wt.
900-70S6035X33S	33 lb
900-70S6035X44S	44 lb

GAS CUTTING & WELDING

Flash Arrestors



Flashback Arrestor Components



Features:

- Color-coded for gas service to provide added safety.
- Internal check valves designed to prevent reverse flow and accidental mixing of oxygen and fuel gases.
- Torch and regulator models provide downstream and upstream protection.
- 10 in maximum cutting capacity.
- For stopping flashbacks by preventing ignition of mixed gases and to protect equipment such as hoses, regulators, and cylinders.

Test & Approvals: UL Listed

Thread - TPI or Pitch: 9/16 in to 18 TPI

SKU	Gas Type	Style	Used With
312-FA-10	Fuel Gas; Oxygen	Torch Style	FA-200P Fuel Gas; FA-100P Oxygen
312-FA-30	Fuel Gas; Oxygen	Regulator Adaptor	FA-230P Fuel Gas; FA-130P Oxygen

Outfits



G350 Series Cutting and Welding Outfits

Features:

- Built-in flashback and check valves for safety.
- Patented high contrast gauges.
- Color-coded knobs on regulators.
- Features G350 regulator.

Welding Range: - 3 in

Includes: CA370-V Cutting Attachment; WH370FC-V Welding Handle; 1-1-101 Cutting Tip; 2-UM-350 Welding Nozzle; G350-150-540 Oxygen Regulator; G350-15-510 Fuel Gas Regulator; 1/4 in x 25 ft RM Hose; Goggles; Striker

Type: Heavy-Duty Cutting and Welding Outfit with CGA-510 Regulator



SKU	Gas Type	Cutting Cap.
900-0384-2704	Acetylene; Oxygen	3/8 in to 6 in



Performer® EDGE™ 2.0 Welding & Cutting Outfits

Features:

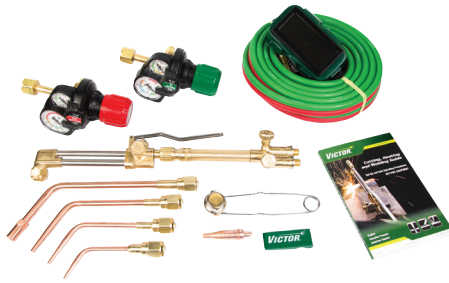
- Cuts up to 6 in (152.4 mm) and welds up to 1/4 in (6.4 mm) with accessories.
- ESS32 Series regulators.
- CA1350 cutting attachment.

Includes: (2) EDGE 2.0 Regulators; CA1350 Cutting Attachment; Cutting Tip; Goggles; Heating Nozzle; Hose; Striker; Tip Cleaner; WH100FC Welding Handle; Welding Nozzle

Cutting Cap.: 5 in

Gas Type: Acetylene; Natural Gas; Propane

SKU	Welding Range
341-0384-2126	1/2 in Cuts; 1/4 in Welds - 6 in Cuts; 1.25 Welds
341-0384-2125	1/2 in Cuts; 1/4 in Welds - 1.25 in Cuts; 6 in Welds



Journeyman EDGE 2.0 Cutting, Heating and Welding Outfits

Features:

- Comes with everything you need to get started.
- Cuts up to 8 in, welds up to 3 in.
- with accessories.
- Up to 1,118,000 BTUs/hour heating.
- ESS42 Series regulators.
- WH 315FC+ torch handle with built-in flash arrestors and check valves.

Cutting Cap.: 8 in

SKU	Gas Type	Welding Range	Type
Includes: CA 2460+ Cutting Attachment; Cutting Tip; Goggles; Heating Nozzle; Hose; Striker; Tip Cleaner; Two EDGE 2.0 Regulator; WH 315FC+ Welding Handle; Welding Nozzles			
341-0384-2100	Acetylene; Carbon Dioxide; Hydrogen/Methane; Nitrogen Inert Gas; Oxygen; Propane LP Gas Air	3/4 in Cuts; 3/64 in Welds - 8 in Cuts; 3 in Welds	Cutting, Heating and Welding Outfit
Includes: CA 2460+ Cutting Attachment; Cutting Tip; Goggles; Heating Nozzle; Hose; Striker; Tip Cleaner; (2) 540/510 ESS32 Edge Regulators; WH 315FC+ Welding Handle; Welding Nozzles			
341-0384-2101	Acetylene	- 3 in	Heavy Duty

Quick Connects



Quick Connect Sets

Features:

- Brass construction provides long service life.
- Non-interchangeable oxygen and fuel gas connectors.
- Instant closure on reverse flow check valves.
- Spring-loaded locking mechanism responds to fingertip action and achieves a gas-tight connection.
- Double seal socket connection on second seal.

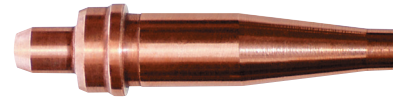
Material: Brass

Used With: B-Size Welding and Cutting Equipment

Gas Type: Fuel Gas; Oxygen

SKU	Connection Type	Includes
312-QDB10	Torch-to-Hose	QDB11; QDB12
312-QDB20	Hose-to-Hose	QDB21; QDB22
312-QDB30	Regulator-to-Hose	QDB31; QDB32

Tips & Nozzles



Victor® Style 1-Pc Acetylene Cutting Tips - 1-101 Series

Features:

- One-piece tip for acetylene-oxygen.
- Medium preheat for general hand and machine cutting.
- Fits 2460, CA 1060, ST, SST, 1400C machine torches.

Material: Copper

Gas Type: Acetylene; Oxygen

Process: General Hand or Machine Cutting

Used With: 2460; CA 1060; ST; SST; 1400C

Head Type: Cutting torch

SKU	Tip Size Symbol	Orifice
900-1-101-1	1	0.047 in
900-1-101-2	2	0.060 in
900-1-101-3	3	0.071 in
900-1-101-4	4	0.083 in

MANUAL WELDING

Electrode Holders



Electrode Holders - High Tong Type

Features:

- Lever designed for better hand clearance and better hold.
- Made from high quality materials for both high conductivity and improved cable connections.
- Ergonomically designed heavy-duty shock-proof nylon handle.

Test & Approvals: Partial IEC 60974-11

Body Material: Brass

SKU	Amps	Electrode Cap.	Cable Cap.	Length
900-A-532	200 A	3.2 mm	2/0	8.46 in
900-A-316	250 A	4 mm	2/0	9.25 in
900-A-732	300 A	5 mm	2/0	10.04 in

TIG WELDING

Tig Torch Parts & Accessories



2% Thoriated Tungsten Electrodes

Features:

- Thoriated tungsten electrodes are consumed more slowly than other types of TIG electrodes and are the most commonly used type of tungsten electrode.
- They provide good arc starts and good arc stability for moderate-current AC or DC welding on copper, nickel, titanium, and stainless steel.
- Thoriated tungsten electrodes contain thorium, which is a radioactive substance.
- The electrodes insert into a compatible TIG torch that is connected to a TIG welder that supplies current to the electrode.

Material: 2% Thoriated

Type: Thoriated

Length: 7 in



SKU	Dia.
900-187GT2	1/8 in
900-1167GT2	1/16 in
900-3327GT2	3/32 in



E3 Tungsten Electrodes

Features:

- Longer life than thoriated electrodes.
- Non-radioactive additives.
- Can be used in both AC and DC processes.
- Excellent arc starting and stability.
- Reduce amperage by 50 recalibrate from other tungsten.

Material: E3

Type: TIG Tungsten Electrode



SKU	Dia.	Length
900-187GE3	1/8 in	7 in
900-1167GE3	1/16 in	7 in
900-3327GE3	3/32 in	7 in

WELDING & CUTTING ACCESSORIES

Anti-Spatter & Chemicals



Anti-Spatters

Features:

- Helps protect MIG gun nozzles, contact tips, accessories and all welding zones during single- and multi-pass welding.
- Non-flammable.
- Reduces spatter build-up on MIG nozzles, prevents spatter adhesion.
- Heat-resistant to withstand high temperature use.
- Paint compatible.
- Contains no silicones, no fluorocarbons.

Chemical Compound: Solvent-Based

Physical Form: Liquid

Type: Anti-Spatter & Nozzle Shield

Color: Clear

Applications: Protects MIG gun nozzles, contact tips and accessories



SKU	Capacity Vol.	Packing Type
905-620-160Z	16 oz	Aerosol Can



Lube Pads

Features:

- Eliminates erratic wire feed caused by dust particles of flashing being trapped inside conduit lines.
- Contains no solvents, abrasives, carbon, sulfur, nitrogen, moly disulphide or silicon.
- Non-flammable, non-toxic.

Chemical Compound: None

Physical Form: Solid

Applications: Welding

SKU	Type	Color
905-LUBE-PAD-6PK-TREATED	Treated Wire Lube Pad	Silver
905-LUBE-PAD-6PK-PLAIN	Plain Wire Lube Pad	White



Nozzle Dip Gels

Features:

- Prevents spatter build up on nozzles and tips.
- Odorless—no unpleasant or harmful odors.

Chemical Compound: Petroleum Jelly

Physical Form: Gel

Type: Anti-Spatter & Nozzle Shield

Color: Blue

Applications: MIG Welding

SKU	Capacity Vol.	Packing Type
905-NOZZLE-DIP	16 oz	Jar



Anti-Spatters

Features:

- High-performance spatter release solution protects welding equipment, jigs and work surfaces from unwanted spatter.
- Readily biodegradable formula with no added color or scent.
- Rinses residue free for use prior to plating or painting.
- Free of silicone, Methylene Chloride and solvents.
- Nonflammable and non-corrosive formula.
- Safe for painted and plated metals.



Chemical Compound: Aqueous Mixture

Physical Form: Liquid

Type: Anti-Spatter; Biodegradable; Non-Corrosive; Non-Flammable; Non-Hazardous

Color: Clear

Applications: Protect Welding Equipment, Jigs, and Work Surfaces

SKU	Capacity Vol.	Packing Type
676-1410001213452	32 oz	Bottle with Trigger Spray
676-1410000413454	1 gal	Jug
676-1400000113457	5 gal	Container

Cable Connectors & Lugs



Cable Connectors

Features:

- Designed to efficiently conduct current through detachable-type connection.
- Cam-action design allows lock-in with a twist and pulls the two halves tightly together.
- Metal parts are precision machined from heavy brass extrusion; resists rust and corrosion.
- Molded rubber connector covers have good resistance to heat, cold, abrasion, ozone, oils and solvents.
- Tapered ends lock out moisture, oil, and dirt.
- Male/female connectors are interchangeable with popular like-size competitor models.

Connection Type: Ball Point

Cable Cap.: 1/0 - 2/0

SKU	Type	Style
900-LC-40	LC40 Male and Female Cable Connectors	Male; Female

Cutting & Burning Guides



Plasma

Cutting Guide w/Bushings

Features:

- Cut medium to large circles by using just one wheel to balance tool.
- For straight and irregular cuts using wheels to hold torch stable.
- Has wheels for stability.

Pipe Capacity: -

Cutting Diam: 5/8 in - 36 in

SKU
496-PBG-601-1.007
496-PBG-601-1.070
496-PBG-601-1.200
496-PBG-601-1.275

Dry Rod Ovens



Electrode Ovens

Features:

- Includes external thermostat control.
- Each oven is tested and heated to rated temperature before shipping.

Test & Approvals: EN60974-1

Voltage: 110 V

Digital Thermometer: No



SKU	Capacity Wt.	Temp. Range	Includes	Watts
900-BW-ELECTRODE-OVEN-ET	10 lb	175° F - 300° F	Analog Thermostat	80 W
900-20LB-ELECTRODE-OVEN	20 lb	85° F - 300° F	Thermostat	220 V
900-50LB-ELECTRODE-OVEN	50 lb	175° F - 300° F	Thermostat	220 V

Ground Clamps



Ground Clamps

Features:

- Contoured handle lever for easy jaw opening.
- Large contact area assures positive grounding.
- Conductor body holds the cable securely.

Jaw Opening: 2 in | **Throat Depth:** 3.86 in



SKU	Amps	Cable Cap.
900-TGC-300	300 A	3/0

Welding Blankets, Curtains, & Rolls



Welding Blankets

Features:

- Protects against light sparks and spatter.
- Grommeted and hemmed with high temperature thread.
- Designed for use in areas where a fabric with high heat resistance is required.

Test & Approvals: Meets ANSI FM4950 1.4.3. Vertical applications with light-moderate exposures resulting from chipping, grinding, heat treating, sand blasting, and light horizontal welding

Material: Fiberglass | **Color:** Tan



SKU	Length	Width
902-2025-18-6x8	6 ft	8 ft

Welding Cable & Hose Reels



Gas-Welding Hose Reels with Hose

Features:

- Reelcraft's exclusive dual swivel design offers and independent body manufactured from aluminum and hard coated for wear resistance.
- Leak prevention - the double sealed, special molded O-rings prevent leakage.
- The swivel inlets are both permanently identified with machined grooves on the gas side to assure proper installation.

Hose O.D.: 0.530 in | **Hose Length:** 50 ft | **Length:** 19-3/4 in

Width: 7-3/8 in | **Height:** 20-1/4 in | **Wt.:** 50 lb

Includes: T-grade hose and hose bumper



SKU	Type	Hose Type
523-TW74500LPT	Retractable	Welding Gas

Welding Cables & Power Cables



Welding Cables

Features:

- Custom lengths available.
- Custom assemblies available.
- Resistant to oil, chemicals, and solvents.

Test & Approvals: RoHS

Style: Welding Cable

Amps: Consult Ampacity Chart

Temp Range: -50° C (-58° F) - 105° C (221° F)

Jacket Material: EPDM

Number of Conductors: 1

Insulation Thickness: 0.08 in

Voltage: 600 V

Insulation: EPDM

Conductor Material: Stranded Copper

Includes: Cable Only



SKU	Cable/Wire Description
911-1/0-250	1/0 AWG x 250 ft
911-2/0-250	2/0 AWG x 250 ft
911-1/0-500	1/0 AWG x 500 ft
911-2/0-500	2/0 AWG x 500 ft



STOUT *DIRECT*

**Stout Label LLC (StoutCorp)
688 Riddle Road, Ste.1200A
Cincinnati, Ohio 45220**

Phone: **(513) 288-3282**

Email: **dean@stoutlabel.com**

Websites: **www.stoutdirect.com
www.stoutlabel.com**

WELDING CATALOG

2023

